

WESTMOOR

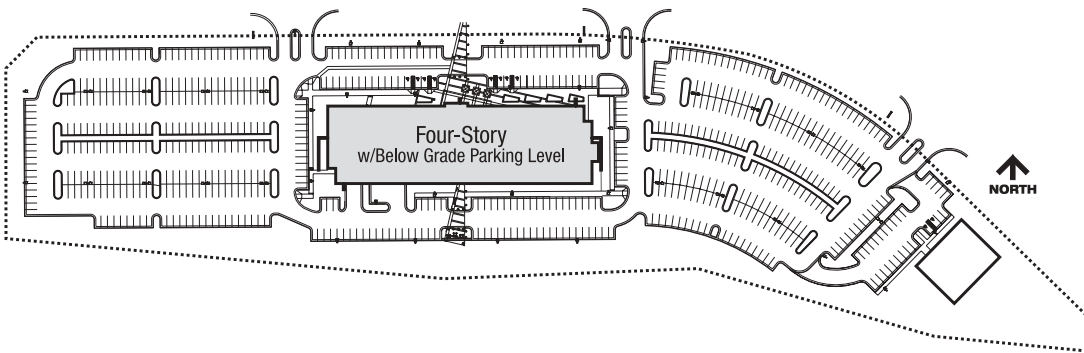
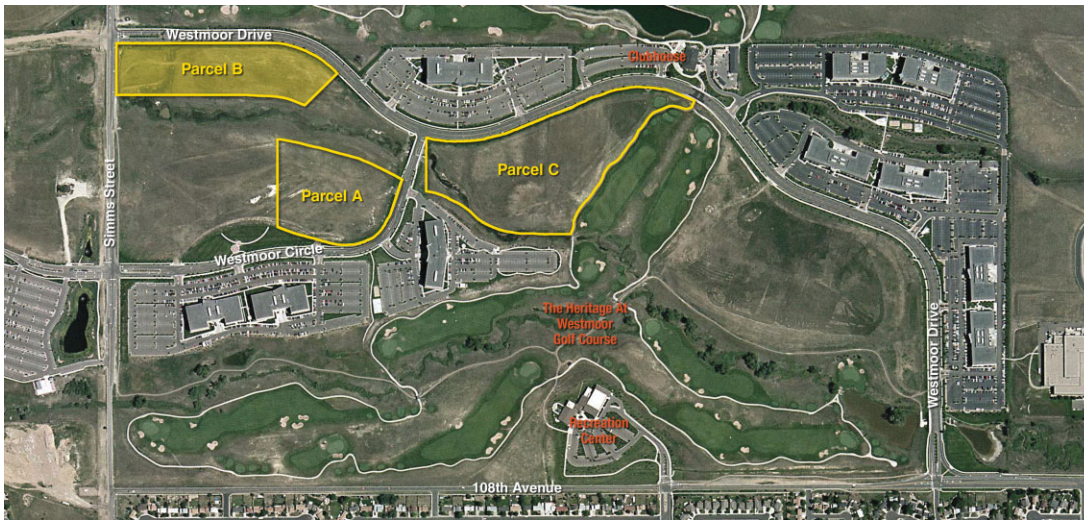
TECHNOLOGY PARK

108th & Westmoor Drive
Westminster, CO 80030

10.234 Acres

Four-Story Building
147,000 Rentable Sq. Ft.

Parcel B



Key Features:

- Potential Uses —
Corporate Campus
Office
R&D
Hotel
Education
- Easy Access to Westview Recreation Center & Championship Heritage Golf Course
- 3 Miles of Scenic Open Space Trails
- Scenic Pocket Parks with Covered Pavilions, Picnic Area, Sports Courts, and Plug-n-Play Plazas with Telephone & Electrical Outlets
- Close Proximity to Support Services, Shopping and Attractive Residential Communities

